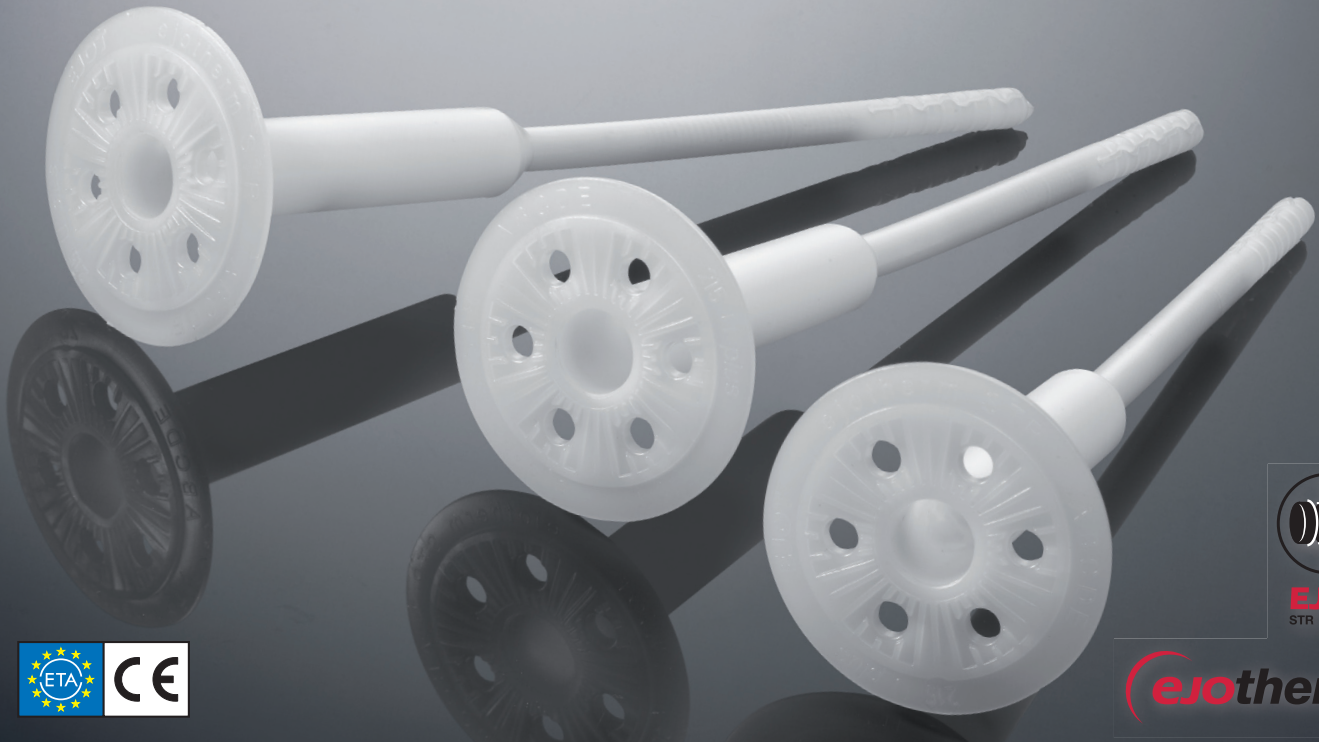




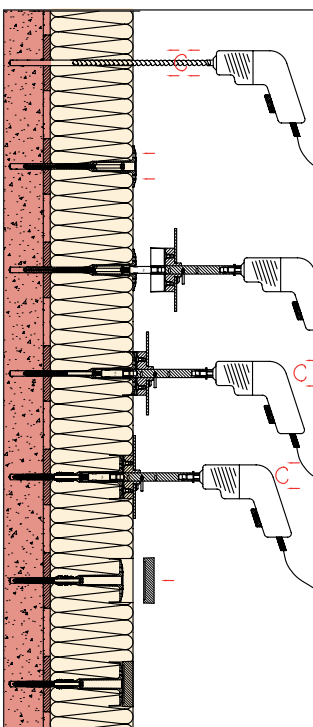
ejothem STR U 2G

Universal screw-in anchor with European Technical Approval for countersunk and surface fixed installation

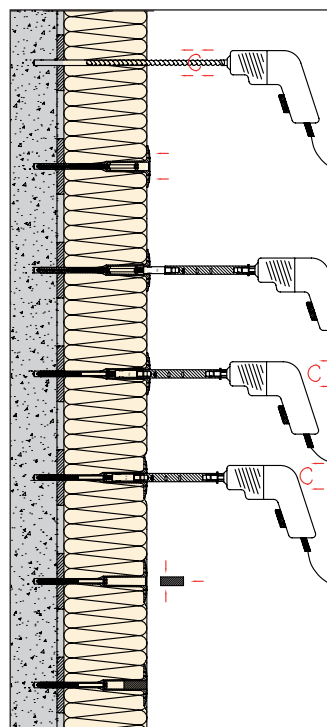
Fixing of insulation boards



Installation



Countersunk installation acc. to EJOT STR-principle with ejothem STR cap



Surface fixed installation with ejothem STR plug

Advantages

- ❑ Approved for all categories of building material
- ❑ Countersunk installation - EJOT STR-principle with ejothem STR cap for homogeneous surfaces and even rendering - quick and easy without milling dust
- ❑ Up to 40% faster installation
- ❑ Optimised thermal bridging (0.001 W/K)
- ❑ Surface fixed installation using ejothem STR plug
- ❑ Short embedment depths, high loads for maximum safety and economic anchor usage
- ❑ Permanent contact pressure
- ❑ Premounted screw for quick installation
- ❑ 100% setting control: the countersunk installation of the washer indicates safe anchorage

ejotherm STR U 2G

Universal screw-in anchor with European Technical Approval for countersunk and surface fixed installation

Fixing of insulation boards

Technical data

Screw diameter	8 mm
Washer diameter	60 mm
Drill hole depth, countersunk installation $h_1 \geq$	50 mm (90 mm)
Drill hole depth, surface fixed installation $h_2 \geq$	35 mm (75 mm)
Embedment depth $h_{ef} \geq$	25 mm (65 mm)
Screw drive	TORX T30
Point thermal transmission λ countersunk installation	0.001 W/K
Point thermal transmission λ surface fixed installation	0.002 W/K
Use categories acc. to ETA	A, B, C, D, E
European Technical Approval	ETA-04/0023

Values in parentheses: anchoring in aerated concrete (use category E)

Characteristic loads

A	Normal weight concrete C 12/15 acc. EN 206-1	1.5 kN
A	Normal weight concrete C 16/20 - C 50/60 acc. EN 206-1	1.5 kN
A	Pre-cast concrete panel C16/20 - C50/60	1.5 kN
B	Clay bricks (Mz) acc. DIN 105	1.5 kN
B	Solid lime sandstone (KS) acc. DIN EN 106	1.5 kN
D	Solid masonry of lightweight concrete (V) acc. DIN 18152	0.6 kN
C	Vertically perforated clay bricks (Hlz) acc. DIN 105	1.2 kN
C	Vertical coring reference bricks (Hlz) acc. ONÖRM B 6124	0.75 kN
C	Sand-lime perforated bricks (KSL) acc. DIN EN 106	1.5 kN
C	Lightweight concrete hollow blocks (HbL) acc. DIN 18151	0.6 kN
D	Lightweight aggregate concrete (LAC)	0.9 kN
E	Autoclaved aerated concrete P2 - P7	0,75 kN

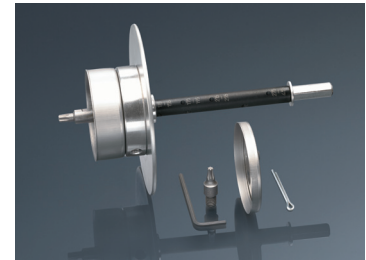
Please note: For calculation of design loads the national safety factors have to be included (e.g. Germany: 3). Please observe the approval.

Accessories

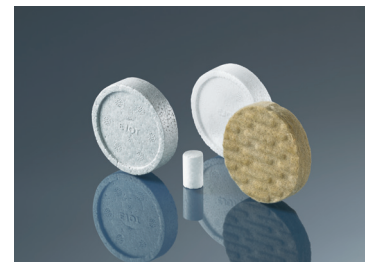
A broad range of accessories is available for the **ejotherm STR U 2G** product group:

ejotherm STR-tool 2G

Specially developed tool for countersunk installation



ejotherm STR caps and plugs



EJOT additional combi washer VT 90 and SBL 140 plus



Product range

Use category A-D		Use category E		Product name and length (mm)	Use category A-D		Use category E		Product name and length (mm)
Insulation (mm)	Insulation (mm)	Insulation (mm)	Insulation (mm)		Insulation (mm)	Insulation (mm)	Insulation (mm)	Insulation (mm)	
New build. ¹⁾	Renovation ²⁾	New build. ¹⁾	Renovation ²⁾		New build. ¹⁾	Renovation ²⁾	New build. ¹⁾	Renovation ²⁾	
80	60 ³⁾	-	-	ejotherm STR U 2G 115	280	260	240	220	ejotherm STR U 2G 315
100	80	60 ³⁾	-	ejotherm STR U 2G 135	300	280	260	240	ejotherm STR U 2G 335
120	100	80	60 ³⁾	ejotherm STR U 2G 155	320	300	280	260	ejotherm STR U 2G 355
140	120	100	80	ejotherm STR U 2G 175	340	320	300	280	ejotherm STR U 2G 375
160	140	120	100	ejotherm STR U 2G 195	360	340	320	300	ejotherm STR U 2G 395
180	160	140	120	ejotherm STR U 2G 215	380	360	340	320	ejotherm STR U 2G 415
200	180	160	140	ejotherm STR U 2G 235	400	380	360	340	ejotherm STR U 2G 435
220	200	180	160	ejotherm STR U 2G 255	420	400	380	360	ejotherm STR U 2G 455
240	220	200	180	ejotherm STR U 2G 275	Product code: 8719 ... 400 (for example: ejotherm STR U 2G 115: 8719 115 400).				
260	240	220	200	ejotherm STR U 2G 295	Packaging: 100 pieces				

¹⁾ 10 mm adhesive ²⁾ 10 mm adhesive and 20 mm old render ³⁾ to be surface fixed installation only

Please note: Always use in combination with ejotherm STR cap and ejotherm STR plug respectively