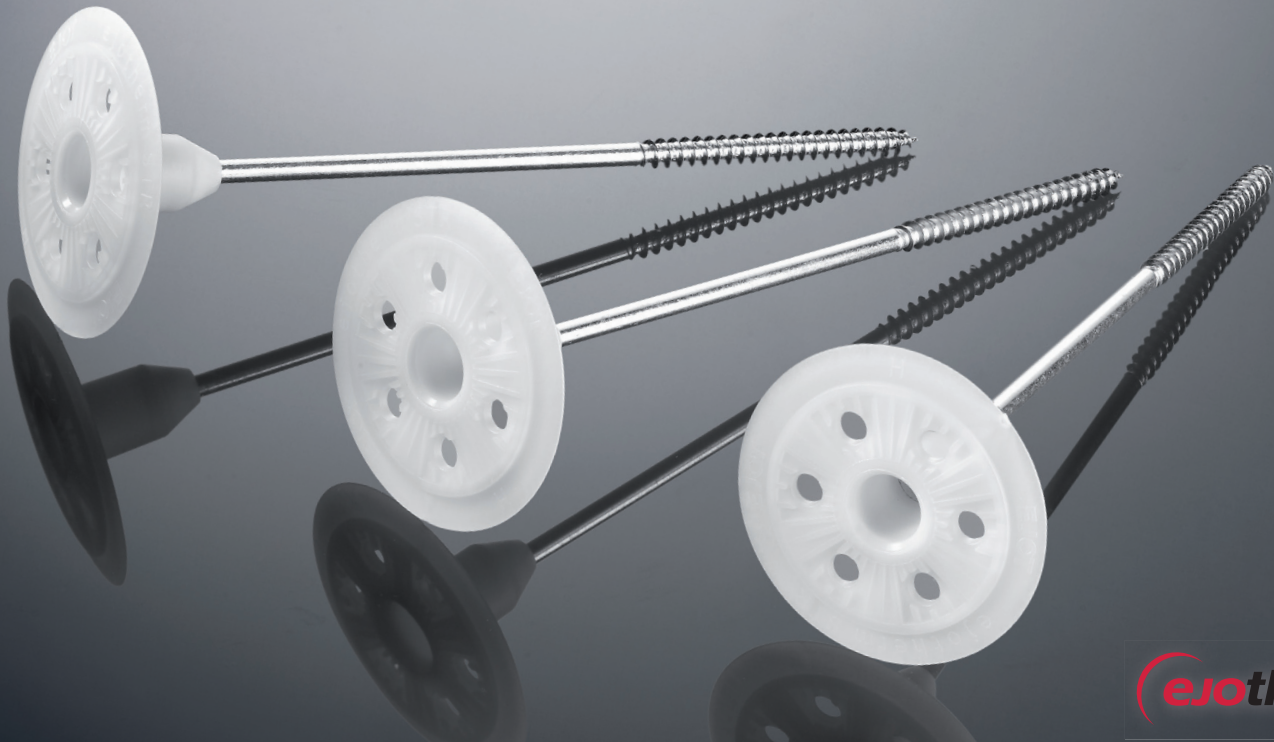




ejothem STR H

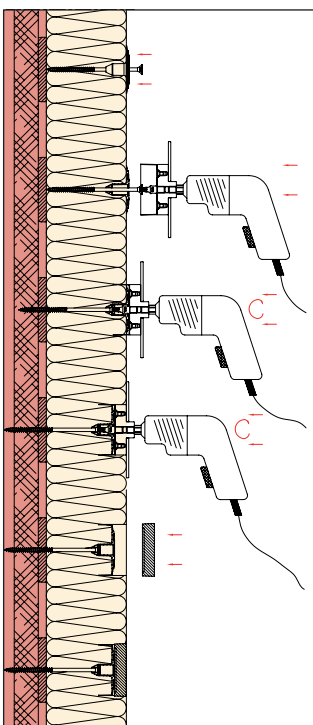
Screw fastener for countersunk and surface fixed installation for timber and some steel substrates

Fixing of insulation boards

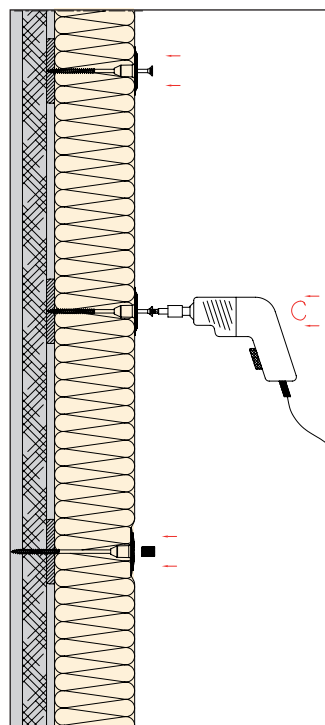


ejothem

Installation



Countersunk installation acc. to EJOt STR principle with ejothem STR cap



Surface fixed installation with ejothem STR plug

Advantages

- ❑ For timber and steel (max. 0.75 mm) substrates
- ❑ Countersunk installation - EJOt STR Principle with ejothem STR cap for homogeneous surfaces and even rendering - quick and easy without milling dust
- ❑ No drilling necessary
- ❑ Surface fixed installation using ejothem STR plug
- ❑ Permanent contact pressure
- ❑ 100% setting control: the countersunk installation of the washer indicates safe anchorage

ejotherm STR H

Screw fastener for countersunk and surface fixed installation for timber and some steel substrates

Fixing of insulation boards

Technical data

Screw diameter	6 mm
Washer diameter	60 mm
Screw-in depth	30-40 mm
Screw drive	TORX T25
Point thermal transmission λ countersunk installation in timber substrates	0.001 W/K
Point thermal transmission λ surface fixed installation in timber substrates	0.002 W/K

Recommended use length

Wood fibreboards (thickness \geq 17.0 mm)	0.25 kN
Chipboards (thickness \geq 13.0 mm)	0.25 kN
Gypsum fibreboards (thickness \geq 12.5 mm)	0.15 kN
OSB plates (thickness \geq 16.0 mm)	0.25 kN
Solid wood plates (thickness \geq 27.0 mm)	0.25 kN

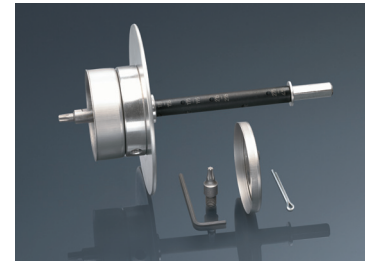
The recommended use loads are calculated with a safety factor of 3.
They may differ according to the object.

Accessories

A broad range of accessories is available for the **ejotherm STR H** product group:

ejotherm STR tool 2G

Specially developed tool for countersunk installation



ejotherm STR caps and plugs



EJOT additional combi washer VT 90 and SBL 140 plus



Product range

Countersunk installation Insulation (mm)	Surface fixed installation Insulation (mm)	Product name and length (mm)	Product code	Packaging (pieces)	Palett unit (pieces)
-	40	ejotherm STR H 080	8711 080 400	100	7,200
-	60	ejotherm STR H 100	8711 100 400	100	7,200
80	80	ejotherm STR H 120	8711 120 400	100	7,200
100	100	ejotherm STR H 140	8711 140 400	100	7,200
120	120	ejotherm STR H 160	8711 160 400	100	7,200
140	140	ejotherm STR H 180	8711 180 400	100	7,200
160	160	ejotherm STR H 200	8711 200 400	100	7,200
180	180	ejotherm STR H 220	8711 220 400	100	7,200
200	200	ejotherm STR H 240	8711 240 400	100	7,200
220	220	ejotherm STR H 260	8711 260 400	100	7,200
240	240	ejotherm STR H 280	8711 280 400	100	7,200
260	260	ejotherm STR H 300	8711 300 400	100	7,200

Please note: Always use in combination with ejotherm STR cap and ejotherm STR plug respectively